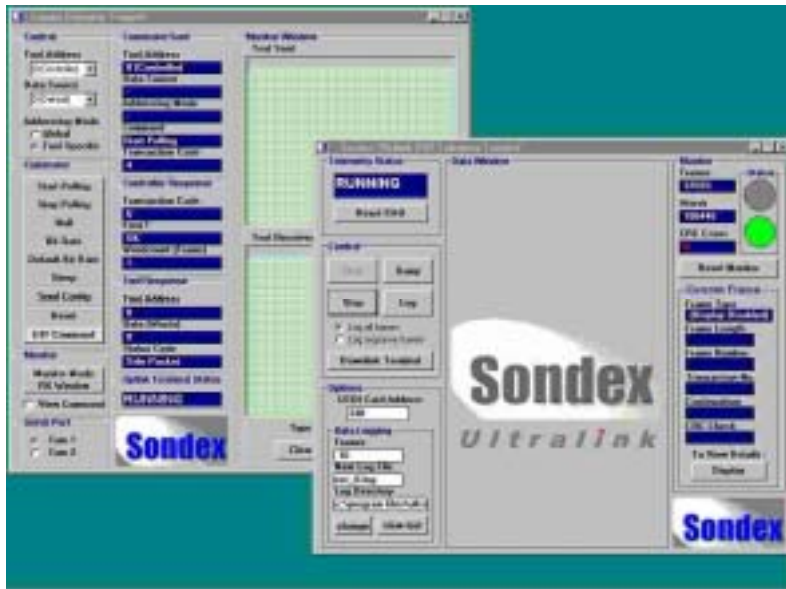


Sondex

Ultralink ADVANCED TELEMETRY SYSTEM



DESCRIPTION

Ultralink has been designed to solve the dual problems of increased numbers of tool sensors and the need to combine tools to reduce total intervention time. This has been achieved by designing a telemetry system that has an extremely fast data rate while allowing many data sources to be used; all while retaining the ability to use standard 7/32" monoconductor wireline.

Key Benefits of Ultralink:

- ◆ Monoconductor operation at 177 degrees C
- ◆ Adaptive bit-rate of 50-100kbit +
- ◆ Rugged, cable-tolerant performance derived from many years' experience
- ◆ High bandwidth Toolbus
- ◆ Multiple structured data sources from each tool address
- ◆ No limit on number or type of sensors in a tool
- ◆ 32 bit wordlength and long data packets for maximum efficiency
- ◆ Data Interleaving for large datasets
- ◆ Downlink to write parameters into intelligent tools, to control tool operating modes, store calibrations, and to operate motorised devices
- ◆ Monopin connector standard, multipin if preferred
- ◆ Time-stamping of data, for precise correlation with depth encoder
- ◆ Automatic Tool ID sequence, includes sensor type and tool Serial Number
- ◆ Full data integrity from word-parity and frame-CRC checking

Telemetry