

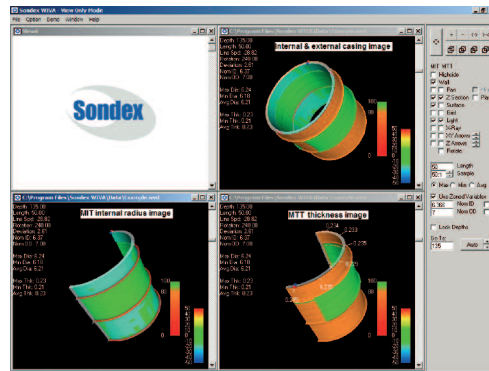
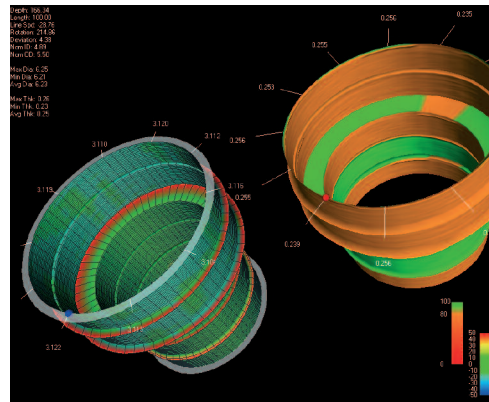
Well Integrity Visual Analysis Software (WIVA)

Graphical visualisation is an excellent way to communicate the vast amounts of complex data acquired from the Multi-finger Imaging Tool (MIT) and Metal Thickness Tool (MTT). WIVA has been developed to generate 3D views of casing and tubing surfaces in order to “see” completion jewellery, perforations, pipe damage, and other anomalies.

Description

WIVA is a very powerful Microsoft Windows® based software package that has been developed by Sondex to allow users the ability to simultaneously view data from the casing inspection tools of the Well Integrity Platform – MIT and MTT. These tools are capable of determining changes in pipe condition - internal diameter and metal thickness - in order to determine damage. A variety of functions in the software allow the user to view the pipe in a number of ways in order to assess anomalies and areas of damage. Internal and external casing data can be displayed together or separately; grid references applied; 3D pipe views split into sections and rotated 360 degrees. Multiple windows can be open in WIVA allowing the user to handle data from different tools and/or different section views.

WIVA also has an automatic demonstration mode that can run saved data files with applied control features – grids, pipe rotation, section views, etc - without the need for user interaction.



Features

- Full MS Windows compatibility.
- 3D imaging of casing inspection data from multiple tools.
- On-screen control of the 3D image, high side indication and pipe orientation.
- A variety of imaging options including mirror imaging, sectional views, lighting effects and sensor value annotation.
- Multiple windows of data can be viewed simultaneously.
- Colour maps to identify nominal and anomalous pipe sections.
- Features editor for annotation.
- Export of images for client reports and visualization file.
- Use of zoned variables for automatic scaling.
- Playback from CD or USB memory.